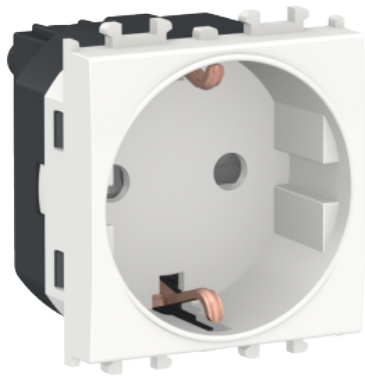


Product data sheet

Specifications



Easy Styl, socket-outlet, 2P + E with shutters, 2 modules, white

LMR5210001

Main

Range of product	Easy Styl
Range	Easy Styl
Product or component type	Socket-outlet
Number of power socket outlets	1
Device presentation	Mechanism
Range compatibility	Easy Styl
Outlet poles configuration	2P + E with shutters
Outlet standard	German
Outlet standard description	Side earth
Number of modules	2 modules
Colour tint	White
Type of packing	Flow-pack
Rated current	16 A at 230/250 V AC 50 Hz
Connections - terminals	screw-clamp terminals
Material	ABS + PC
Height	51 mm
Width	44 mm
Depth	39 mm
Net weight	0.037 kg
IK degree of protection	IK01
IP degree of protection	IP20

Packing Units

Unit Type of Package 1	PCE
Number of Units in Package 1	1
Package 1 Weight	37.5 g
Package 1 Height	4.2 cm
Package 1 width	4.5 cm
Package 1 Length	5 cm

Unit Type of Package 2	BB1
Number of Units in Package 2	10
Package 2 Weight	421 g
Package 2 Height	5.8 cm
Package 2 width	12.5 cm
Package 2 Length	24.1 cm
Unit Type of Package 3	CAR
Number of Units in Package 3	120
Package 3 Weight	5.34 kg
Package 3 Height	24.5 cm
Package 3 width	25.5 cm
Package 3 Length	39 cm

Offer Sustainability

EU RoHS Directive	Under investigation
--------------------------	---------------------